

# PRODUCT CATALOGUE

**TRACKERS  
BUNDLES  
SOFTWARE  
ACCESSORIES**

# TRACKERS

Tramigo Ltd is a global company with headquarters in Finland and subsidiaries in Africa, Asia, Latin America and Europe. Tramigo Ltd designs and manufactures cutting edge asset and personal tracking devices that are secure and easy to use for both companies and consumers alike. Tramigo products are globally available. For more information about Tramigo tracking products, please visit [www.tramigo.com](http://www.tramigo.com).

# T23 Series Vehicle Tracking

# TRAMIGO™

**Tramigo T23 Series devices are the most advanced and best selling GPS vehicle security products for personal use and fleet management.**



- **Supporting fully both online and offline modes:** Check location of your vehicles instantly with text messages (SMS) or over Internet connection (GPRS), never miss those critical alarms again
- **FOTA (Firmware Over The Air) update firmware wirelessly without pulling the unit out of the vehicle**
- **Receive periodic useful reports such as speed, location, status, trip and zone crossings**
- **Add up to 1000 of own Landmarks with Checkpoint Alarm reporting**
- **Get instantly notified in case of vehicle theft or misuse and remotely disable the vehicle**
- **Multiple language support: Commands, reports and TLD landmarks\* on any mobile phone , PC or web**
- **No monthly fees, total freedom to select mobile and Internet service provider of your choice**

T23 Series device enables you to know always where your vehicle is and is easy to install to any vehicle. It can be installed fully hidden and powered from vehicle's battery.

Tramigo T23 Series device comes with all the software you need to monitor your vehicles from the privacy of your mobile device, PC or fleet control center, all without monthly fees of licence payments: M1 Fleet Enterprise (PC/Server), M1 Fleet Web and M1 Move (major smart phones and Android tablets).

T23 Series device has special version for each country using local language and local TLD landmarks. There are no monthly or annual service fees; user only pays normal price SMS messages or Internet connection fee of his choice.

## **T23 Series device advanced features include:**

- Solid case for direct installation: No separate charger or installation case required
- In-built 1300 mAh back-up battery
- Accelerometer/tilt sensor for towing alarms, secure parked and unguarded vehicles
- Including up to 300 000 landmarks and space for hundreds of own landmarks
- Power reporting to detect disconnection or bad vehicle battery
- Shut Down Engine, Ignition Sensing, Panic button and other IO features
- Geofencing, temperature, trip, odometer, vehicle idle time and speed
- Periodic time, distance and angle based location and status reporting
- Full offline (SMS) and online functionality (Internet/GPRS)

All Tramigo T23 Series Products have 24 months International Warranty. Tramigo offers full 24/7 English support via phone, email and Skype. Tramigo country offices provides local support.

**T23 Series devices are excellent for private vehicle monitoring and fleet management.**

**Visit [www.tramigo.com](http://www.tramigo.com) to fulfil your tracking desires.**



\* Exclusive to Tramigo devices: Tramigo Landmarks Data turns difficult coordinates and complicated maps into language that everybody anywhere can read and understand. Landmarks are common geographical language that everyone is able to speak and understand anywhere in the world. T23 Series comes preloaded with up to 300 000 landmarks and covering the whole continent and possible to add 1000 own landmarks with zone reporting. (e.g. home, office, garage, construction site.)

Tramigo is a company of private capital with its headquarters in Finland and subsidiaries in Africa, Asia, Latin America and Europe. Tramigo manufactures the worlds best selling tracking devices that are easy and economical to use in everyday life and business applications. Tramigo products are globally available. For more information about Tramigo tracking products, please visit [www.tramigo.com](http://www.tramigo.com). For distributor, re-seller and partnership opportunities, email [info@tramigo.com](mailto:info@tramigo.com)

**tracking.**

## Tramigo Tracker Range



### T23-FLEET Professional Fleet Security & Monitoring

#### Suitable for:

- \* Advanced fleet management
- \* Service providers
- \* OEM solutions
- \* Heavy machinery
- \* Trucks

- ✓ Easy to implement
- ✓ No monthly or annual fees
- ✓ Monitor driving habits & reduce fuel usage
- ✓ Alarms for critical cases: theft, speeding, zone crossing etc
- ✓ Prevent unauthorized trips & theft
- ✓ Manage vehicle usage and status



### T23-TRACK Vehicle Security & Tracking

#### Suitable for:

- \* Car security
- \* Insurance companies
- \* Leasing companies
- \* Medium and small vehicles
- \* Personal security

- ✓ Easy to install
- ✓ No monthly or annual fees
- ✓ Alarms for critical cases: theft, speeding, zone crossing etc
- ✓ Suitable for all tracking purposes



### T23-MAGNUM Tracking Assets during Transit

#### Suitable for:

- \* Container tracking
- \* Goods in transit
- \* Machinery without power source

- ✓ No installation
- ✓ Automatic reporting options: object reaching checkpoints, leaving/ arriving destination, being tampered with etc
- ✓ Extra durable case
- ✓ Extended battery life
- ✓ Container lock available



### TRAMIGO-POCKET The Ultimate Personal Tracker

#### Suitable for:

- \* Family locating
- \* Small vehicle tracking
- \* Assets securing
- \* Personal security

- ✓ Ultra thin
- ✓ No installation
- ✓ Discrete, easy to carry or hide
- ✓ Extra long battery life



## Tramigo T23 Fleet

### Professional Fleet Security & Monitoring



## T23series

### Easy to implement

T23 Fleet is robust to install to any car, truck or other vehicle and can be fully hidden. Insert the SIM card and connect T23 Fleet to vehicle power and you are ready to control your vehicle.

### Monitor and control your vehicles without monthly fees

T23 Fleet communicates its location to your control center or mobile device via GPRS or SMS. Drivers can additionally use T23's 2-way voice function to call your control center - or send out their location in case of emergency with the SOS button.

There are no monthly or annual fees, the user pays only the normal operator fees of the data or SMS usage.

### Keep tabs on driving habits and reduce fuel use

Detect idling engines, speeding and other inefficient driving habits and profile drivers with complete vehicle use statistics.

### Prevent unauthorized trips and theft

Set allowed zones for your vehicles, get instant notifications if your vehicles start or complete trips and connect T23 Fleet to external inputs to detect ignition, tampering, door opening, fuel theft and more.

### Utilize wide range of professional accessories

Possibility to monitor fuel level with 3rd party analog fuel sensor. Add multiple 1-Wire accessories such as driver identification and temperature sensors.

### Monitor vehicle use and status

Keep your control center up to date on vehicle maintenance schedules with T23's odometer and monitor engine or compartment temperatures with the temperature sensor. All reports can be compiled by vehicle into visual vehicle usage statistics with total trips, distance travelled, average speeds and more!

## T23 Fleet Key Features:



Geofencing to detect unauthorized vehicle use / detours.



Handsfree audio with your control center at the push of a button.



Power reporting to detect disconnection or bad vehicle battery



Motion detection to secure parked vehicles & unguarded assets.



SOS button to send out vehicle location when in need of assistance.



Ignition detection and disabling (optional)



Speed reporting to eliminate bad driving habits.



GPS antijamming features to remove interference from up to 8 jammers.



Periodic reporting based on time or distance travelled.



Idle alarm to detect running engines.



Multiple 1-Wire sensors such as Driver ID and temperature.



Analog sensors for example for fuel and voltage measurements.



Accurate GPS positioning with GPRS & GSM communication.



Landmark data for easy location even when maps are unavailable.



Tramigo is a company of private capital with its headquarters in Finland and subsidiaries in Africa, Asia, Latin America and Europe. Tramigo manufactures the worlds best selling tracking devices that are easy and economical to use in everyday life and business applications. Tramigo products are globally available. For more information about Tramigo tracking products, please visit [www.tramigo.com](http://www.tramigo.com). For distributor, re-seller and partnership opportunities, email [info@tramigo.com](mailto:info@tramigo.com)



## Tramigo T23 Fleet Technical Data

### Industry benchmark footprint and functionality

|                           |                        |   |
|---------------------------|------------------------|---|
| <b>Target Segment</b>     |                        | Fleet, Heavy machinery and Trucks   |
| <b>GPS</b>                | Receiver type          | Telit JF2, SiRF 4   |
|                           | Number of Channels     | 48 tracking   |
|                           | Navigation sensitivity | Acquisition -147 dBm, tracking -163 dBm, cold start <35 s, hot start 1 s  |
|                           | Antijamming            | Remove interference from up to 8 jammers  |
| <b>GSM / GPRS</b>         | Modem type             | Sierra Wireless Wismo 228 GSM/GPRS (Multi slot class 10, Terminal B)  |
|                           | Frequencies            | 850 MHz, 900MHz, 1800 MHz, 1900MHz  |
|                           | Communication          | SMS, TCP, UDP   |
|                           | SIM card type          | Normal  |
| <b>MCU</b>                | Processor              | ARM Cortex-M3   |
|                           | Code Memory            | 786 kbytes (total code memory)  |
|                           | RAM                    | 96 kbytes (total RAM)   |
|                           | Data flash             | 16 Mbytes (total data flash)  |
| <b>Audio</b>              | Microphone             | Optional microphone/headset for remote listening  |
| <b>User interface</b>     | Buttons                | Power, emergency call and SOS buttons   |
|                           | LEDs                   | 3 status LEDs for Power, GPS and GSM  |
| <b>Connectivity</b>       | Power and IO           | GPIO (Power and I/O connectors) and Micro USB (Power and data)  |
| <b>I/O Features</b>       | Inputs                 | 1 Dedicated Ignition<br>2 Switch (SOS, Sensor)<br>1 Digital (Powercut)<br>1 Analog (0 - 30V, 12-bits)<br>1 1-Wire interface (Multiple 1-Wire sensors and meters in one input) |
|                           | Outputs                | 1 Digital<br>1 Dedicated Immobilizer  |
|                           | I/O cable type         | 12 wires Molex 43045-1200   |
| <b>Antennas</b>           | GPS                    | Internal GPS and optional external antenna (Fakra connector)  |
|                           | GSM                    | Internal quad band antenna  |
| <b>Sensors</b>            | Onboard                | Shock, 3D accelerometer, temperature  |
| <b>Power</b>              | Consumption            | Operation: Typical 40-90 mA, Standby: 1 mA  |
|                           | Input voltage          | 6 - 32 DC   |
| <b>Battery</b>            | Li-ion                 | 1300 mAh Note: Internal backup battery  |
|                           | Operation time         | Typical 1 day, depends on user profile and conditions<br>Standby up to 50 days  |
| <b>Software features</b>  | Communication          | SMS and GPRS with message buffering on data flash   |
|                           | Over-the air updates   | Configuration, parameters, firmware including application   |
|                           | Landmark database      | Landmark databases for many countries, containing whole continent (check availability)  |
| <b>Temperature range</b>  | Operation              | -20 - +80 °C, Li-ion discharge -20 - +60 °C, Li-ion charge 0 - +45 °C   |
| <b>Certifications</b>     |                        | RoHS, CE 2004/108/EC, 99/5/EC   |
| <b>Available versions</b> |                        | Flash size variants, Landmark Database, language, casing  |
| <b>Dimensions</b>         |                        | 130 x 60 x 26 mm  |
| <b>Weight</b>             |                        | 165 g (with battery), 125g (without battery)  |



## Tramigo T23 Track

### Vehicle Security & Tracking

**T23 Series**

### Easy to install

T23 Track is easy to install to any car or vehicle and can be fully hidden. Just insert the SIM card and connect T23 Track to vehicle power and you are ready to track your vehicle and turn the needed automatic reporting on.

### Monitor and control your vehicles without monthly fees

T23 Track communicates its location to you via SMS or GPRS. Tramigo M1 Move is easy to use and free SMS application for smart phones.

There are no monthly or annual fees, the user pays only the normal operator fees of the data or SMS usage.

### Monitor driving habits and reduce fuel costs

Detect idling engines, speeding, and other fuel consuming driving habits.

### Prevent unauthorized trips and theft

Set allowed zones for your vehicles, get instant notifications if your vehicles start or complete trips and connect T23 Track to external inputs to detect ignition, tampering, door opening and more!

### Utilize practical accessories

Arm your vehicle with T23 internal motion detector, utilize optional door opening sensors and burglar alarm to protect your vehicle.

### Monitor vehicle use and status

Keep up vehicle maintenance schedules with T23 Track's odometer. All reports can be compiled by vehicle into visual vehicle usage statistics with total trips, distance traveled, average speeds and more!

## T23 Track Key Features:



Geofencing to detect unauthorized vehicle use / detours.



Power reporting to detect disconnection or bad vehicle battery



Motion detection to secure parked vehicles & unguarded assets.



External SOS button to send out vehicle location when in need of assistance.



Ignition detection and disabling (optional)



Speed reporting to eliminate fuel consuming driving habits.



Periodic reporting based on time or distance travelled.



Idle alarm to detect running engines.



Inbuilt temperature sensor



GPS antijamming features to remove interference from up to 8 jammers.



Accurate GPS positioning with GPRS & GSM communication.



Landmark data for easy location even when maps are unavailable.

Tramigo is a company of private capital with its headquarters in Finland and subsidiaries in Africa, Asia, Latin America and Europe. Tramigo manufactures the worlds best selling tracking devices that are easy and economical to use in everyday life and business applications. Tramigo products are globally available. For more information about Tramigo tracking products, please visit [www.tramigo.com](http://www.tramigo.com). For distributor, re-seller and partnership opportunities, email [info@tramigo.com](mailto:info@tramigo.com)





## Tramigo T23 Track Technical Data

### Industry benchmark footprint and functionality

|                           |                        |  |
|---------------------------|------------------------|--|
| <b>Target Segment</b>     |                        | Cars and personal security   |
| <b>GPS</b>                | Receiver type          | Telit JF2, SiRF 4  |
|                           | Number of Channels     | 48 tracking  |
|                           | Navigation sensitivity | Acquisition -147 dBm, tracking -163 dBm, cold start <35 s, hot start 1 s               |
|                           | A-GPS                  | CGEE   |
|                           | Antijamming            | Remove interference from up to 8 jammers   |
| <b>GSM / GPRS</b>         | Modem type             | Sierra Wireless Wismo 228 GSM/GPRS (Multi slot class 10, Terminal B)                   |
|                           | Frequencies            | 850 MHz, 900 MHz, 1800 MHz, 1900 MHz   |
|                           | Communication          | SMS, TCP, UDP  |
|                           | SIM card type          | Normal   |
| <b>MCU</b>                | Processor              | ARM Cortex-M3  |
|                           | Code Memory            | 786 kbytes (total code memory)   |
|                           | RAM                    | 96 kbytes (total RAM)  |
|                           | Data flash             | 16 Mbytes (total data flash)   |
| <b>Audio</b>              | Microphone             | No (Microphone variants possible)  |
| <b>User interface</b>     | Buttons                | Power button   |
|                           | LEDs                   | 3 status LEDs for Power, GPS and GSM   |
| <b>Connectivity</b>       | Power and IO           | GPIO (Power and I/O connectors) and Micro USB (Power and data)                         |
| <b>I/O Features</b>       | Inputs                 | 1 Dedicated<br>2 Switch *<br>1 Digital *   |
|                           | Outputs                | 1 Digital<br>1 Dedicated Immobilizer *   |
|                           | I/O cable type         | 5 wires or 12 wires Molex 43045-1200   |
| <b>Antennas</b>           | GPS                    | Internal GPS   |
|                           | GSM                    | Internal quad band antenna   |
| <b>Sensors</b>            | Onboard                | Shock, 3D accelerometer, temperature   |
| <b>Power</b>              | Consumption            | Operation: Typical 40-90 mA, Standby: 1 mA   |
|                           | Input voltage          | 6 - 32 DC  |
| <b>Battery</b>            | Li-ion                 | 1300 mAh Note: Internal backup battery   |
|                           | Operation time         | Typical 1 day, depends on user profile and conditions<br>Standby up to 50 days         |
| <b>Software features</b>  | Communication          | SMS and GPRS with message buffering on data flash                                      |
|                           | Over-the air updates   | Configuration, parameters, firmware including application                              |
|                           | Landmark database      | Landmark databases for many countries, containing whole continent (check availability) |
| <b>Temperature range</b>  | Operation              | -20 - +80 °C, Li-ion discharge -20 - +60 °C, Li-ion charge 0 - +45 °C                  |
| <b>Certifications</b>     |                        | RoHS, CE 2004/108/EC, 99/5/EC  |
| <b>Available versions</b> |                        | Flash size variants, Landmark Database, language, casing                               |
| <b>Dimensions</b>         |                        | 100 mm x 60 mm x 21 mm   |
| <b>Weight</b>             |                        | 120g (with battery), 90g (without battery)   |

\* Optional



# T23 MAGNUM

# TRAMIGO™

Version 1.1

## Tracking for applications where power is not available.

The T23 Magnum is based on the Tramigo T23 product family of GPS tracking devices combined with a large battery and rugged weatherproof case to provide an optimized tracking solution for solutions where direct power connection from the vehicle or asset is not available.

Track construction equipment, generators, containers, vehicle etc. with Tramigo Magnum anywhere in the World with automatic or on demand location reporting options. With sufficient battery life on a single charge to give many weeks or even months reporting.

Track movement, monitor locations, set geo-fence alarms and be notified of departure and arrival of goods and be notified if your assets are being tampered with.



**Dimensions:**  
130 x 80 x 36 mm

**Weight: 320 grams**

The robust casing of the T23 Magnum is designed to house an extra large battery and protect the T23 from shock and the elements.

## Technical Specifications

### Power

3.7 V, 10,000 mAh, Li-Polymer battery  
Charging through DC supply input  
Typical power consumption 40-90 mA, standby 1 mA

### Temperature

Operating -20 to +80 °C  
Charging 0 to +45 °C

## Durable and Weatherproof Casing

T23 Magnum is enclosed in a solid weatherproof ABS casing providing full protection from the environment. It is waterproof, dust proof and rugged same time and with dimensions of 130mm x 80mm x 36mm is small enough to be hidden in most places on your assets or vehicles to be tracked.

## Extended Battery Life

With automatic sleep modes and an extra large battery, the T23 Magnum is designed to remain operational without an external power connection for up to several weeks in normal use.

During long transits over sea or remote land areas T23 can be set for standby reporting mode with a battery life of over one month.

## Optional User Scenarios

T23 Magnum can be used in conjunction with a high security container lock or mounting case for trailers.

Container 6: Trip started  
at Dockyard Railway  
Station Plymouth,  
Cornwall, UK



The Magnum has all the features of T23, including landmark based location and checkpoint alarms that allow automatic reporting when it reaches the port of loading dock.

### GSM

850/900/1800/1900 Sierra Wireless Wismo 228  
Internal antenna  
Multi slot class 10, Terminal B

### GPS

SiRF 4 based GPS module, Telit JF2  
Internal antenna  
Cold Start: <35 s, Hot start: 1 s  
Signal strength acquisition -147 dBm, tracking -163 dBm

Tramigo is a company of private capital with its headquarters in Finland and subsidiaries in Africa, Asia, Latin America and Europe. Tramigo manufactures the worlds best selling tracking devices that are easy and economical to use in everyday life and business applications. Tramigo products are globally available. For more information about Tramigo tracking products, please visit [www.tramigo.com](http://www.tramigo.com). For distributor, re-seller and partnership opportunities, email [info@tramigo.com](mailto:info@tramigo.com)

**tracking.**



## Tramigo T23 Magnum Technical Data

### Industry benchmark footprint and functionality

|                           |                        |  |
|---------------------------|------------------------|--|
| <b>Target Segment</b>     |                        | Assets tracking where power is not available   |
| <b>GPS</b>                | Receiver type          | Telit JF2, SiRF 4  |
|                           | Number of Channels     | 48 tracking  |
|                           | Navigation sensitivity | Acquisition -147 dBm, tracking -163 dBm, cold start <35 s, hot start 1 s               |
|                           | A-GPS                  | CGEE   |
|                           | Antijamming            | Remove interference from up to 8 jammers   |
| <b>GSM / GPRS</b>         | Modem type             | Sierra Wireless Wismo 228 GSM/GPRS (Multi slot class 10, Terminal B)                   |
|                           | Frequencies            | 850 MHz, 900 MHz, 1800 MHz, 1900 MHz   |
|                           | Communication          | SMS, TCP, UDP  |
|                           | SIM card type          | Normal   |
| <b>MCU</b>                | Processor              | ARM Cortex-M3  |
|                           | Code Memory            | 786 kbytes (total code memory)   |
|                           | RAM                    | 96 kbytes (total RAM)  |
|                           | Data flash             | 16 Mbytes (total data flash)   |
| <b>Audio</b>              | Microphone             | No (Microphone variants possible later on)   |
| <b>Connectivity</b>       | Power                  | Special power plug to charge the battery.  |
| <b>Antennas</b>           | GPS                    | Internal GPS   |
|                           | GSM                    | Internal quad band antenna   |
| <b>Sensors</b>            | Onboard                | Shock, 3D accelerometer, temperature   |
| <b>Power</b>              | Consumption            | Operation: Typical 40-90 mA, Standby: 1 mA   |
| <b>Battery</b>            | Li-Po                  | 10 000 mAh   |
|                           | Operation time         | Standby up to 60 days.   |
| <b>Software features</b>  | Communication          | SMS and GPRS with message buffering on data flash                                      |
|                           | Over-the air updates   | Configuration, parameters, firmware including application                              |
|                           | Landmark database      | Landmark databases for many countries, containing whole continent (check availability) |
| <b>Temperature range</b>  | Operation              | -20 - +80 °C, Li-Po discharge -20 - +60 °C, Li-Po charge 0 - +45 °C                    |
| <b>Compatibility</b>      | Software and tools     | Fully compatible with T23 Series Tramigo tools, commands and end-user software         |
| <b>Certifications</b>     |                        | RoHS, CE 2004/108/EC, 99/5/EC  |
| <b>Dimensions, casing</b> |                        | 130 x 80 x 36 mm   |
| <b>Weight, total</b>      |                        | 320 grams  |



LIGHT  
**49**  
grams

## Tramigo Pocket

Keep important people and valuable assets safe with Tramigo Pocket.

## Tracking wherever you go!

Always know where your company personnel, children or other people are. Pocket is also ideal for tracking valuable goods in transit.

## Easy to deploy

Just charge the battery and Tramigo Pocket is ready to be used. Tramigo Pocket is powered by an internal battery that lasts for days, just drop it in your pocket, briefcase or backpack to track!

## Intelligent software

Tramigo Pocket works in the local language and comes with detailed landmarks specially developed for each country. Instead of cryptic GPS coordinates, Tramigo Pocket sends a location message with a local landmark from your area, allowing you to understand messages instantly even if you don't have access to maps.

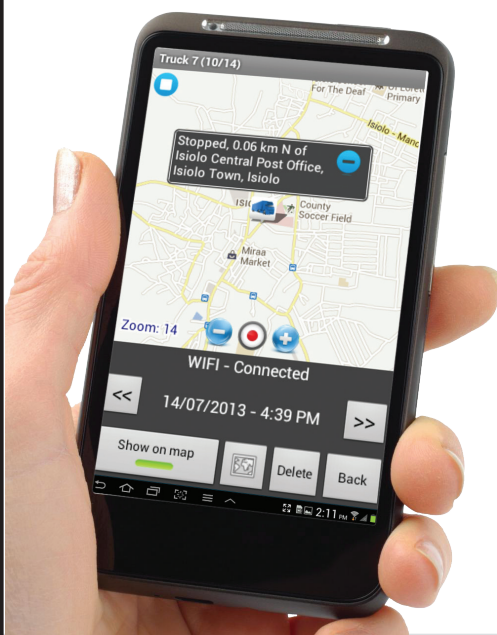
## Long battery life

Low-power sleep modes and intelligent power management of the firmware let Tramigo Pocket can survive long periods without charging while still maintaining periodic reporting. Wakeup from a power saving mode can be triggered by a scheduled event, motion detection or an external input.



FREE PC & Smartphone Software

Pocket comes with FREE software to track on any mobile device or PC and is compatible with our M1FE server for large fleets.



## Tramigo Pocket

- Discrete, easy to carry or hide
- Extra long battery life – remains operational for days without recharging
- Attention button to alert in case of emergency
- Preloaded with local landmark database for easy tracking
- Automatic trip, speed and zone crossing reports
- Customized location landmarks can be added: home, school, office, etc.

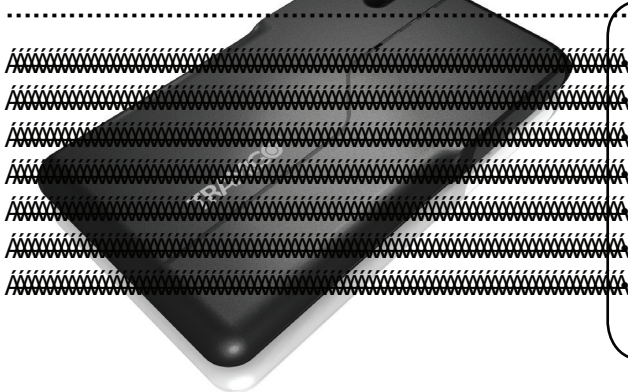
## Tramigo Pocket Technical Data

### Industry benchmark footprint and functionality

|                           |                        |   |
|---------------------------|------------------------|---|
| <b>GPS</b>                | Receiver type          | MediaTek MT3329 based GPS CA L1, WAAS/EGNOS support                       |
|                           | Number of channels     | 22 tracking + 66 acquisition  |
|                           | Navigation sensitivity | -165 dBm  |
|                           | A-GPS                  | EPO (Extended Prediction Orbit)   |
| <b>GSM / GPRS</b>         | Modem type             | GSM/GPRS  |
|                           | Frequencies            | 850 MHz, 900 MHz, 1800 MHz, 1900 MHz                                      |
|                           | Communication          | SMS, FTP, HTTP, TCP, UDP  |
| <b>MCU</b>                | Processor              | ARM Cortex-M3   |
|                           | Code Memory            | 512 kbytes (total code memory)  |
|                           | RAM                    | 64 kbytes (total RAM)   |
|                           | Data flash             | 8 Mbytes (total data flash), optionally up to 32 Mbytes                   |
| <b>Audio</b>              | Microphone             | Listen in capability  |
| <b>User interface</b>     | Buttons                | Power, emergency call and report buttons                                  |
|                           | LEDs                   | 3 status LEDs for Power, GPS and GSM                                      |
| <b>Connectivity</b>       | Power supply           | USB   |
| <b>Antennas</b>           | GPS                    | Internal GPS  |
|                           | GSM                    | Internal quad band antenna  |
| <b>Sensors</b>            | Onboard                | Shock, 3D accelerometer, temperature                                      |
| <b>Power consumption</b>  | Sleep current          | 30 uA @ 3.7V DC, may vary depending on configuration                      |
| <b>Battery</b>            | Li-ion                 | 1000 mAh  |
|                           | Operation time         | Typical 5 - 7 days, may vary depending on use profile and conditions      |
| <b>Software features</b>  | Communication          | SMS and GPRS with message buffering on data flash                         |
|                           | Over-the-air updates   | Configuration, parameters, signal scripts, firmware including application |
|                           | Landmark database      | Landmark databases for many countries (check availability)                |
| <b>Temperature range</b>  | Operation              | -20 – +80 C, Li-ion discharge -20 – +60 C, Li-ion charge 0 – +45 C        |
| <b>Certifications</b>     |                        | RoHS, CE 2004/108/EC, 99/5/EC   |
| <b>Available versions</b> |                        | Flash size variants, Landmark Database, language, enclosure colours       |
| <b>Enclosure</b>          |                        | IP54, dust and splashing water protected                                  |

A

.



### Key features:

- Industry benchmark Landmark Database support
- Extremely slim enclosure, easy to hide and carry in a pocket
- Extremely sensitive A-GPS receiver
- Quad band GSM/GPRS modem
- Ultra low power consumption
- OTA parameter, system signal and updates
- Extensive language support

# T23 Series Bundles



## T23 Fleet bundles

Tramigo T23 Fleet - Perfect Tool for Fleet Management and Security



**T23FLEET-F-nn\*** (T23 Fleet Bulk) for fleet installation, includes T23FLEET-UNIT, T23-BAT & T23-IO-FULL. **T23FLEET-FG** (T23 Fleet Bulk GPS) for fleet hidden installation with GPS extra support. Includes T23FLEET-UNIT, T23-BAT,

T23-IO-FULL and T23-GPS.

**T23FLEET-RS12-nn** (T23 Fleet Security Standard 12V) for fleet installation in vehicles with 12V battery, more control with Standard Immobilizer accessory! Includes T23FLEET-UNIT, T23-BAT, T23-GPS, T23-IO-FULL & T23-IMMOBILIZER12.

**T23FLEET-RS24-nn** (T23 Fleet Security Standard 24V) for fleet installation in vehicles with 24V battery, more control with Standard Immobilizer accessory! Includes T23FLEET-UNIT, T23-BAT, T23-GPS, T23-IO-FULL, T23-REGULATOR24 & T23-IMMOBILIZER24.

**T23FLEET-FG24-nn** (T23 Fleet Bulk GPS 24V) for fleet hidden installation in 24V-battery vehicles, with GPS extra support. Includes T23FLEET-UNIT, T23-BAT, T23-IO-FULL, T23-GPS and T23-REGULATOR24.

**T23FLEET-C-nn** (T23 Fleet Tracking Device) attractively packed for retail with all accessories for vehicle installation. Includes T23FLEET-UNIT, T23-BAT, T23-IO-FULL, T23-GPS, T23-ATB, T23-AMIC, T23-USB, T23-CLA, sales box and manual.

**T23FLEET-CS12-nn** (T23 Fleet Tracking Device 12V) attractively packed for retail with all accessories for 12V-battery vehicle installation, extra control with Standard Immobilizer accessory! Includes T23FLEET-UNIT, T23-BAT, T23-IO-FULL, T23-GPS, T23-ATB, T23-AMIC, T23-USB, T23-CLA, T23-IMMOBILIZER12, sales box and manual.

nn\* Country specific PS socket code

Tramigo Ltd is a global company with headquarters in Finland and subsidiaries in Africa, Asia, Latin America and Europe. Tramigo Ltd designs and manufactures cutting edge asset and personal tracking devices that are secure and easy to use for both companies and consumers alike. Tramigo products are globally available. For more information about Tramigo tracking products,



# T23 RETAIL EDITION

T23 is available in a retail box customized for your region\* that is easy to display and contains all the software, instructions and accessories needed by private car and entrepreneur fleet owners.

\*Various language versions available. Ask your Tramigo representative for more information.

All that is needed to start tracking is a pre- or postpaid SIM card.

## Increase sales with T23 retail

The T23 retail starter kit comes with 20 T23 retail units of your choice and a display stand to present T23 on the shop floor.

For more information on how to get your T23 point of sale stand, contact your Tramigo sales manager.

# TRAMIGO™



The T23 retail package explains the key benefits of Tramigo to private car and small fleet owners.



The T23 retail starter kit comes with 20 T23 units and a retail stand to promote and display your Tramigo T23-C or T23-CS12 versions.

## Immobilizer included in T23-CS12 version

T23 retail can also be ordered with a 12 Volt immobilization relay prepacked inside the salesbox.

The 12V immobilization relay connects to T23, allowing remote ignition and engine disabling on any car or other vehicle using a 12V system.



The 12 Volt immobilizer is clearly indicated with the immobilizer included sticker.

| T23 VERSION  | ORDER CODE      |
|--|-----------------|
| Standard retail edition:                               | <b>T23-C</b>    |
| With 12V immobilizer accessory:                        | <b>T23-CS12</b> |
| T23 Retail set with stand (includes 20x T23 C or CS12) | <b>T23-POS</b>  |

### Accessories included in T23 retail: (Additional 12V immobilizer relay included in T23-CS12)



External GPS Antenna



Backup Battery



Microphone



External Panic Button



Cigar Lighter Adapter



USB Cable



Vehicle Power Cables



Mobile & PC Tracking App

Tramigo is a company of private capital with its headquarters in Finland and subsidiaries in Africa, Asia, Latin America, the Middle East and Europe. Tramigo manufactures the worlds best selling tracking devices that are easy and economical to use in everyday life and business applications. Tramigo products are globally available. For more information about Tramigo tracking products, please visit [www.tramigo.com](http://www.tramigo.com). For distributor, re-seller and partnership opportunities, email [info@tramigo.com](mailto:info@tramigo.com)

**tracking.**

T23 Bulk editions are optimized for low cost shipping and are cost-effective for volume fleet management and volume installation cases.

T23 bulk can be ordered with or without the standard 12V immobilizer relay and is perfect for vehicle security and fleet tracking\*.

\*24V custom voltage regulator for heavy vehicles and Intelligent Immobilizer also available. Contact us for more information.

## Volume Installation

## Fleet Management

## Vehicle Security



Buying in bulk is a cost-effective way for volume installation cases or any other instance where you handle the installation for your customer.

Add the needed accessories according to your need:



**T23-ATB**

The T23 Remote Microphone and Panic Button are not included in T23 bulk editions but may be added using the following order codes. For a complete list of T23 accessories, contact your dedicated Tramigo representative.



**T23-SOS**

### T23 versions without a salesbox:



#### Tramigo T23 Tracking Device

Tramigo's latest vehicle tracker that's perfect for fleet tracking. For more information on T23's features, visit us at [www.tramigo.com](http://www.tramigo.com)

**T23-IMMOBILIZER**

#### 12Volt Immobilizer Relay

Cost effective relay that connects T23 to any 12V system, adding remote ignition/engine shutdown functions.



**T23-IO-FULL**

#### Vehicle Power / I/O Alarm Cables

Connects T23 to vehicle power and allows ignition detection and external sensor connections (4 inputs, 3 outputs)



**T23-BAT**

#### Back Up Battery

Allows T23 to continue operation for several days in case vehicle power is cut or damaged. Required for power cut alarm function.



**T23-GPS**

#### External GPS Antenna

Enhances T23's internal antenna and allows double protection and hidden installation in a location less likely to be discovered by thieves or dishonest staff.



#### Full Software Package

Tramigo T23 comes with full smartphone, tablet, standalone PC and control center server software for full online or offline control of your vehicles.

## 12V Standard immobilizer relay for vehicle security

Using the standard immobilizer relay is the most cost-effective way to add the engine disable feature to Tramigo T23. The 12 Volt immobilizer relay is included in the T23-RS12 version.






The immobilizer relay allows remote ignition or engine disabling via SMS or GPRS from your control center or any mobile phone or tablet.

The T23 12 Volt immobilizer relay is connected to the standard T23 power cabling and is compatible with all 12 Volt systems.

**Warranty Note:** T23-FG and RS12 are designed for 12V systems. Installing T23 to a 24V system without voltage surge protection voids warranty. Custom voltage surge protectors are available for heavy vehicle use - ask your Tramigo dealer for more info.

### Shipping Info

T23 bulk versions are shipped without a retail package for maximum cost effectiveness and come in a protective plastic bag.

| T23 versions without a salesbox:   |  | T23-CS12 | T23-FG |
|--|--|----------|--------|
|  | <b>Tramigo T23 Tracking Device</b><br>Tramigo's latest vehicle tracker that's perfect for fleet tracking. For more information on T23's features, visit us at <a href="http://www.tramigo.com">www.tramigo.com</a> | ✓        | ✓      |
|  | <b>12Volt Immobilizer Relay</b><br>Cost effective relay that connects T23 to any 12V system, adding remote ignition/engine shutdown functions.   | ✓        |        |
|  | <b>Vehicle Power / I/O Alarm Cables</b><br>Connects T23 to vehicle power and allows ignition detection and external sensor connections (4 inputs, 3 outputs)   | ✓        | ✓      |
|  | <b>Back Up Battery</b><br>Allows T23 to continue operation for several days in case vehicle power is cut or damaged. Required for power cut alarm function.  | ✓        | ✓      |
|  | <b>External GPS Antenna</b><br>Enhances T23's internal antenna and allows double protection and hidden installation in a location less likely to be discovered by thieves or dishonest staff.                      | ✓        | ✓      |
|  | <b>Full Software Package</b><br>Tramigo T23 comes with full smartphone, tablet, standalone PC and control center server software for full online or offline control of your vehicles.                              | ✓        | ✓      |

### Reselling direct to consumers or need to display your Tramigo T23?

Ready-to-sell retail package also available. T23-C contains a wide range of accessories and software to track on a phone, tablet or PC. Ask us for more information.



T23 Bulk editions are optimized for low cost shipping and are cost-effective for volume fleet management and volume installation cases.

T23 bulk can be ordered with or without the standard 12V immobilizer relay and is perfect for vehicle security and fleet tracking\*.

\*24V custom voltage regulator for heavy vehicles and Intelligent Immobilizer also available. Contact us for more information.

## Volume Installation

## Fleet Management

## Vehicle Security



Buying in bulk is a cost-effective way for volume installation cases or any other instance where you handle the installation for your customer.

Add the needed accessories according to your need:









T23-ATB

The T23 Remote Microphone and Panic Button are not included in T23 bulk editions but may be added using the following order codes. For a complete list of T23 accessories, contact your dedicated Tramigo representative.



T23-SOS

### T23 versions without a salesbox:

|  | T23-RS12 | T23-FG |
|--|----------|--------|
|  <b>T23FLEET-UNIT</b><br><b>Tramigo T23 Tracking Device</b><br>Tramigo's latest vehicle tracker that's perfect for fleet tracking. For more information on T23's features, visit us at <a href="http://www.tramigo.com">www.tramigo.com</a> | ✓        | ✓      |
|  <b>T23-IMMOBILIZER</b><br><b>12Volt Immobilizer Relay</b><br>Cost effective relay that connects T23 to any 12V system, adding remote ignition/engine shutdown functions.   | ✓        |        |
|  <b>T23-IO-FULL</b><br><b>Vehicle Power / IO Alarm Cables</b><br>Connects T23 to vehicle power and allows ignition detection an external sensor connections (4 inputs, 3 outputs)   | ✓        | ✓      |
|  <b>T23-BAT</b><br><b>Back Up Battery</b><br>Allows T23 to continue operation for several days in case vehicle power is cut or damaged. Required for power cut alarm function.  | ✓        | ✓      |
|  <b>T23-GPS</b><br><b>External GPS Antenna</b><br>Enhances T23's internal antenna and allows double protection and hidden installation in a location less likely to be discovered by thieves or dishonest staff.                            | ✓        | ✓      |
|  <b>Full Software Package</b><br>Tramigo T23 comes with full smartphone, tablet, standalone PC and control center server software for full online or offline control of your vehicles.  | ✓        | ✓      |

### Reselling direct to consumers or need to display your Tramigo T23?

Ready-to-sell retail package also available. T23-C contains a wide range of accessories and software to track on a phone, tablet or PC. Ask us for more information.



## 12V Standard immobilizer relay for vehicle security

Using the standard immobilizer relay is the most cost-effective way to add the engine disable feature to Tramigo T23. The 12 Volt immobilizer relay is included in the T23-RS12 version.

The immobilizer relay allows remote ignition or engine disabling via SMS or GPRS from your control center or any mobile phone or tablet.

The T23 12 Volt immobilizer relay is connected to the standard T23 power cabling and is compatible with all 12 Volt systems.

**Warranty Note:** T23-FG and RS12 are designed for 12V systems. Installing T23 to a 24V system without voltage surge protection voids warranty. Custom voltage surge protectors are available for heavy vehicle use - ask your Tramigo dealer for more info.

### Shipping Info

T23 bulk versions are shipped without a retail package for maximum cost effectiveness and come in a protective plastic bag.



# T23 24VOLT

## HEAVY VEHICLE EDITION

TRAMIGO™

T23-24V editions are specifically designed for 24Volt heavy machines, trucks and other 24V systems and come with a custom built voltage regulator that shields the tracking unit from potential damage.

## Reliability in 24V Systems

A 24V system may send voltage surges through the system that may damage the tracking devices' sensitive electronics. Built specifically for T23, the voltage regulator protects the tracker from power spikes, ensuring reliable performance compared to trackers not designed for heavy vehicle use.



Designed specifically for 24Volt systems, the 24V voltage regulator enables reliable operation in any heavy vehicle.



Most trackers are not built to cope with 24V systems and run a high risk of damage during ignition or normal operation.

## Custom 24V Immobilizer

Tramigo's custom 24V intelligent immobilizer is compatible with 24V systems and allows remote vehicle ignition and engine shut down in addition to vehicle power and external sensor connections.

### Shipping Info

Shipped without a retail package in a protective plastic bag for maximum cost effectiveness.

Add the needed accessories according to your need:









T23-ATB

The T23 Remote Microphone and Panic Button are not included in T23 bulk editions but may be added using the following order codes. For a complete list of T23 accessories, contact your dedicated Tramigo representative.



T23-SOS

### T23 Versions for 24V use:

|   |   | T23-RS24 | T23-FG24                                |
|---|---|----------|---|
| <br>T23FLEET-UNIT     | <b>Tramigo T23 Tracking Device</b><br><i>Tramigo's latest vehicle tracker that's perfect for fleet tracking and vehicle security. For more information on T23's features, visit us at <a href="http://www.tramigo.com">www.tramigo.com</a></i>  | ✓        | ✓                                       |
| <br>T23-GPS           | <b>External GPS Antenna</b><br><i>Enhances T23's internal antenna and allows double protection and hidden installation in a location less likely to be discovered by thieves or dishonest staff.</i>  | ✓        | ✓                                       |
| <br>T23-BAT           | <b>Back Up Battery</b><br><i>Allows T23 to continue operation in case vehicle power is cut or damaged. Required for power cut alarm function.</i>   | ✓        | ✓                                       |
| <br>T23-IMMOBILIZER24 | <b>24Volt Intelligent Immobilizer</b><br><i>Connects T23 to vehicle power with remote ignition/engine shutdown via SMS or GPRS, power cut alarms. Includes 1 additional sensor input (i.e. SOS button)</i>  | ✓        | Includes standard vehicle power cables. |
| <br>T23-REGULATOR24   | <b>T23 24V Custom Voltage Regulator</b><br><i>Shields the tracking device from voltage surges during ignition that may cause device malfunction in heavy vehicle installations.</i><br><b>Warranty Note:</b> When connecting Tramigo T23 to a 24Volt system, the T23 Surge Protector is required. 24V installation without surge protection voids warranty. | ✓        | ✓                                       |
|                       | <b>Full Software Package</b><br><i>Tramigo T23 comes with full smartphone, tablet, standalone PC and control center server software for full online or offline control of your vehicles.</i>  | ✓        | ✓                                       |

Tramigo is a company of private capital with its headquarters in Finland and subsidiaries in Africa, Asia, Latin America, the Middle East and Europe. Tramigo manufactures the worlds best selling tracking devices that are easy and economical to use in everyday life and business applications. Tramigo products are globally available. For more information about Tramigo tracking products, please visit [www.tramigo.com](http://www.tramigo.com). For distributor, re-seller and partnership opportunities, email [info@tramigo.com](mailto:info@tramigo.com)

tracking.

# M1 Software

## Free Software - Freedom of Choice

Tramigo lets you combine online tracking via GPRS with the superior reliability of SMS that gives you truly real time tracking that's critical in emergency situations or remote areas.

Tramigo also gives you the freedom to use multiple interfaces simultaneously and give you the ability to get copies of critical messages direct to your mobile device while letting your control center handle routine data. All with no monthly fees or foreign servers.

### Recommended for:



### Compatible with Tramigo Devices:

**ALL** T22 & T23 Series **T23** T23 Series Only

#### SMS



#### SMS BASED LOCATION - TRACK ON ANY MOBILE PHONE

Exclusive to Tramigo devices, embedded Tramigo Landmarks allow locations to be understood as simple SMS messages with no software installation, maps or internet.

any gsm phone



#### Vehicle Security Mobile Backup



TRAMIGO RECOMMENDS ANDROID



#### M1 MOVE FOR SMARTPHONES - POWER IN YOUR HANDS

Use by itself to keep tabs on private vehicles or small fleets or combine with PC fleet management softwares to get critical reports direct to your mobile device. M1 Move lets you track anytime - anywhere.



#### M1 FLEET ENTERPRISE - SECURE SERVER WITH CLIENT & WEB ACCESS

Designed for large fleet operators and service providers, the M1FE server offers you full online and web tracking interfaces with advanced fleet management features. Simultaneous SMS backup optional.

#### FLEET ENTERPRISE OFFLINE EDITION

M1FE offline edition is perfect for security concerned customers tracking with no data transmitted over the internet. Embedded visual mapping and custom TLD gridmapping solutions also available. Perfect for security organizations such as army, police and security services.



#### Server & web tracking for large fleet management and service providers.

#### REBRANDING FOR SERVICE PROVIDER BUSINESSES - FULL CONTROL OF YOUR BUSINESS WITHOUT FOREIGN SERVERS

M1 Fleet Enterprise + M1 Move for Android provides the perfect platform for service providers such as fleet management and stolen vehicle recovery services. Design your own business model and host your tracking server with no licence fees to Tramigo or reliance on foreign servers. Full product & UI rebranding packages available. Contact us today for more details!



#### M1 MOVE FOR ANDROID TABS - EXCELLENT FOR SMALL FLEETS

Get all the features of M1 Move with added security & fleet management features and a larger screen - Perfect for mobile fleet management without setting up a PC and excellent for emergency access to large fleets.



#### Fleet Management without server setup



#### M1 FLEET CLASSIC - STANDALONE CONTROL CENTER

Offline control center that is quick to set up without servers. Excellent for real time alarms in remote areas with weak networks and customers with high privacy requirements. Operates via SMS only and requires GSM modem.





# M1 Fleet PC Software.

## M1 Fleet -FREE PC software for Fleet Tracking!

- Excellent for Fleet Owners and Managers -Use at your office or while on the move
- Excellent for Security -Smart tracking for stolen vehicles in the field or control center

## M1 Fleet Main Features

M1 Fleet PC Software and Tramigo T22 bring fleet management and monitoring to a new level. As free software there are no monthly or annual license fees: plug-and-play corporate vehicle and personnel tracking and monitoring made affordable and user-friendly. M1 Fleet is also specifically designed for vehicle recovery and security operations. So good that our customers constantly ask; how much do I need to pay?\*

\* M1 Fleet is free of charge, log on to [www.tramigo.com](http://www.tramigo.com) to download it today. Pay only the SMS and voice to chosen GSM operator.



## TLD Landmarks powers fleet management and security operations!

Checking location and monitoring of your fleet has never been so easy. Detailed TLD Landmarks makes the understanding of your vehicle locations very fast and unlike traditional visual mapping, TLD landmarks gives you instant understanding of your vehicles whereabouts. M1 Fleet also displays the TLD landmarks and user locations\*\* on top of online maps making it instantly understandable.

\*\* You can add up to 500 user locations to your T22. Tramigo T22 has up to 10.000 TLD Landmarks of your country pre-installed.

### 1.Smart Track

With the press of a button, turn on many tracking options to closely track stolen vehicles or expensive cargo. The icon changes red, allowing you to see at a glance your important vehicles.

### 2. T22 messages and TLD landmarks on top of online maps

T22 location with TLD landmarks or user locations is displayed on top of online maps. Users can chose to view maps, satellite pictures or both. TLD landmarks on top of online maps make location instantly understandable!

### 3.MS Access database

All reports are stored in a Microsoft Access database and can be easily imported into Excel or other PC applications.

### 4. Alerts

High priority reports from your Tramigos are highlighted and can also activate an audible alert sound when using in a monitoring center.

### 5. Live Tracking

By pressing one button you can plot the selected Tramigo's location on the map. The map is updated as new location reports are received.

### 6. Breadcrumb Trails

See the places that your Tramigo has travelled during a trip or several trips over a day, week, or month.

### 7. Control Center

From the Control center tab you can set all the main reporting options for each Tramigo with a few mouse clicks. Trip, Speed, Alarm, Zone, Distance, Sensor, and Time reports are easier to use.

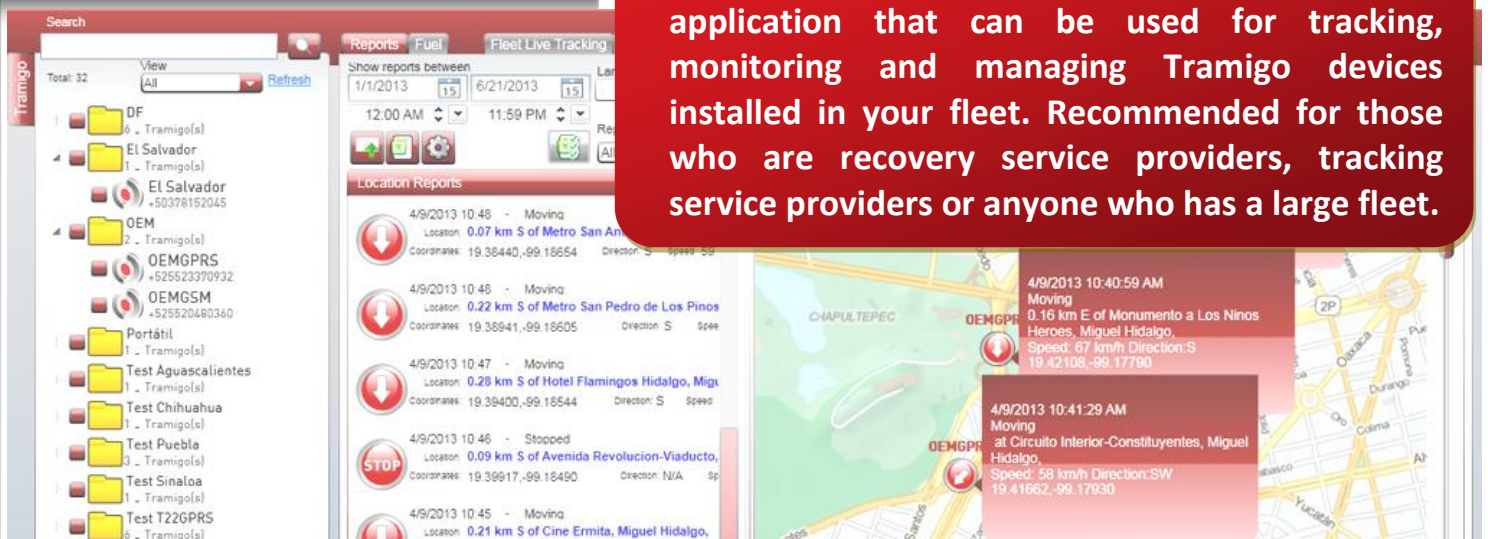


M1 Fleet is not obligatory: T22 can be used with any GSM phone with easy to use text commands.

## M1 Fleet Enterprise

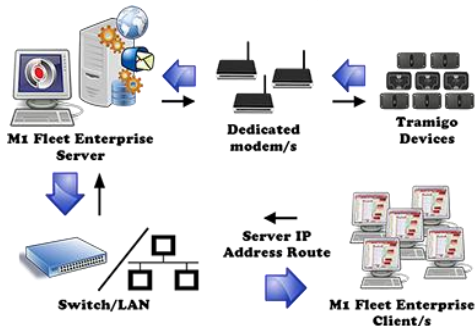
For more information. Email: [support@tramigo.com](mailto:support@tramigo.com)

**Tramigo M1 Fleet Enterprise is a client-server application that can be used for tracking, monitoring and managing Tramigo devices installed in your fleet. Recommended for those who are recovery service providers, tracking service providers or anyone who has a large fleet.**



### Client-server architecture

Supports multi-user, remote viewing of data, and other benefits of a client-server deployment.



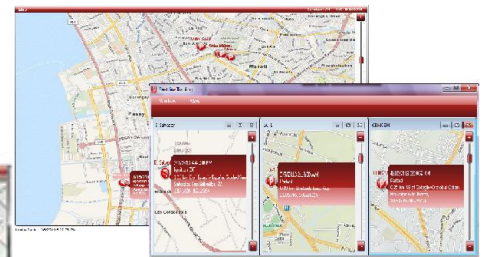
### History playback and snail trail

View the whereabouts of your vehicle connected by line



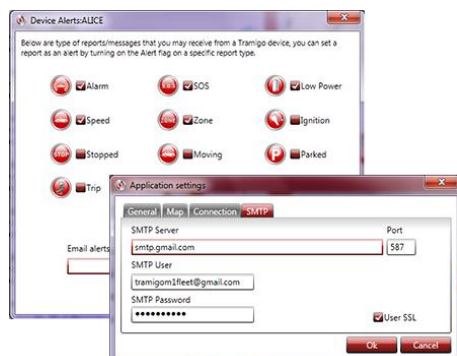
### Live tracking

See your vehicle(s) move on map as it reports position including Tramigo Landmarks (TLD)



### Alert Email Notification

Automatically receive an email when there's an alert received from your fleet.



### Map downloading/ caching for offline

Download an area of map when connected to Internet, and use the offline map during offline.

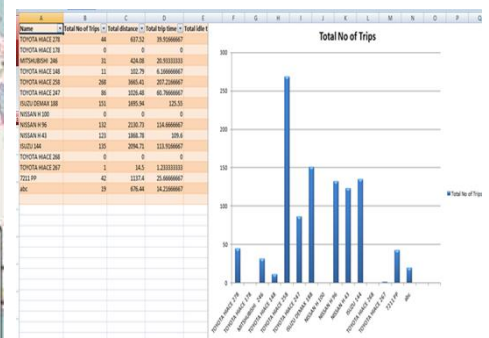


### Supports SMS and GPRS simultaneously

The system can process Tramigo device reports via SMS using a GSM modem and via GPRS through public static IP

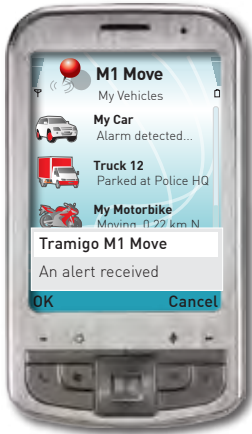
Note: T22 supports SMS only.  
T23 supports both GPRS and SMS.

### Ability to create and export reports to an excel or CSV file



### M1 Move Smartphone.

For more information. Visit [www.tramigo.com](http://www.tramigo.com)



M1 Move- FREE Smart Phone Software!

- Excellent for Fleet Owners- Tracking Anywhere
- Excellent for Families-Track your loved ones and vehicles

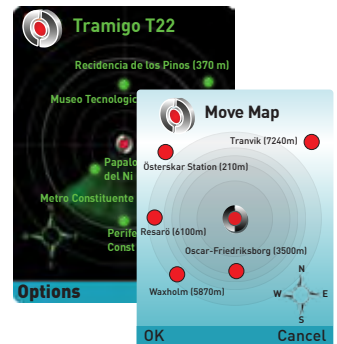


M1 MOVE is the perfect tool for anyone with several T22s in use\*. Install M1 Move to your smart phone and monitor your fleet anywhere with ultimate convenience and privacy! All T22 commands are just one keystroke away! It is also the perfect tool for families or anyone wanting to enjoy the unique features such as the MoveMap and TLD landmarks powered by online maps.

\* M1 Move and Fleet software are tools that enhance the T22, but are not obligatory: T22 can be used with any GSM phone with easy to use commands without any additional software or phone model requirements!

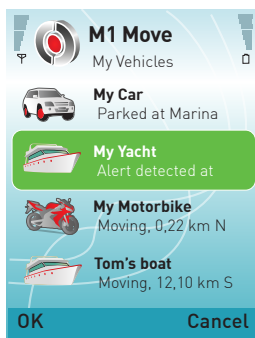
#### MoveMap™

This simply revolutionary feature in M1 Move gives assistance and adds efficiency in ultimate security and fleet operations. A useful and equally fun everyday tool for all families. Best of all, you get your MoveMap by sending SMS: the first ever visual map solution created from a simple and reliable text message!



M1 Move makes online maps easy to understand anywhere

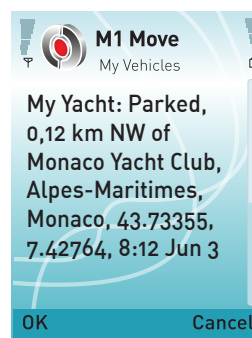
M1 Move is good news for online maps users. Check any T22 location message in any online map with detailed TLD landmarks, an online map has never been so easy to use.\*\*



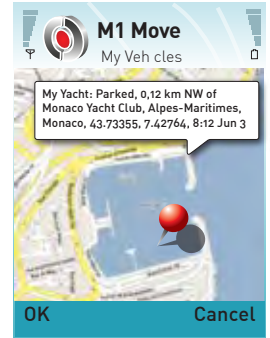
M1 Move shows all your vehicles.



Select commands from a list.



Instant T22 Location reports via SMS



Any online map is easy to use with TLD on top.

\*\*A GPRS or 3G enabled SIM card and phone is required for online map use on mobile phones.



### M1 Move iPhone

For more information. Visit [www.tramigo.com](http://www.tramigo.com)



M1 Move - Free iPhone Software from the App Store

- Track your Fleet, conveniently!
- Find your loved ones, easily!

M1 Move for iPhone is now available for personal and business use in conjunction with the Tramigo T23 tracking device – The Best Selling Vehicle Tracker in the market. Tracking your vehicles while on the move has never been this easy! M1 Move for iPhone works conveniently with the T23 and keeps all your reports secure. Fleet trackers will enjoy the convenience of sending commands with just a few keystrokes. Families and friends are at ease knowing their loved ones can easily be located from around the globe.

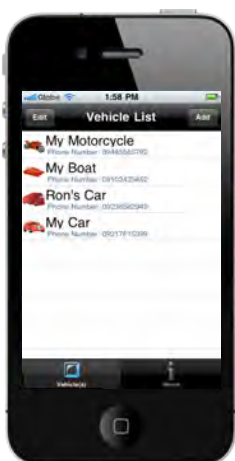


#### Tramigo Landmarks

M1 Move utilizes the Tramigo Landmarks which are pre-installed in your T23 device. This helps you instantly determine the location of your vehicle, whether it is parked or on the move - you will always know! Most importantly, Tramigo Landmarks are readily available from the device anywhere in the world, without the need for an internet connection.

In case you still need a traditional map viewing: M1 Move also turns on the T23's support for viewing "Find" reports on online maps. With this feature turned on, a vehicle's location can easily be plotted and shown on the map.

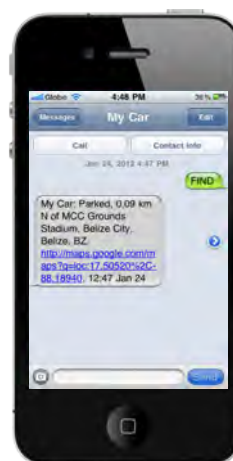
Requires T22 firmware 1.57 or newer.



M1 Move shows all your vehicles.



Select commands from a list.



Instant T23 location with TLD via SMS



Support for viewing location on online maps

# T23 Accessories

## T23 Fleet Accessories



Description: **GSM modem**

Order Code: **T22-M1FLEETMOD55i-nn\***

**CINTERION GSM MC55i modem**

**Used with M1 Fleet software.**

**Connected to the Server, you can set up Fleet Control Center quickly and easily to track your fleet from your office.**

\*nn - Country specific PS socket code



Description: **Driver Identification Key**

Order Code: **T23-DRIVERID-FOB**

**The ID key is with iron ring, compatible with magnetic T23-DRIVERID-READER. This key holds the unique driver identification number. Bulk packaged.**



Description: **Driver Identification Reader**

Order Code: **T23-DRIVERID-READER**

**Identify driver and receive reports with the current driver name and unique number. Manage and profile vehicle usage according to each driver, eliminate bad driving habits. Magnetic reader is used with T23-DRIVERID-FOB. Bulk packaged.**